

# NEW DWELLINGS AND POPULATION GROWTH

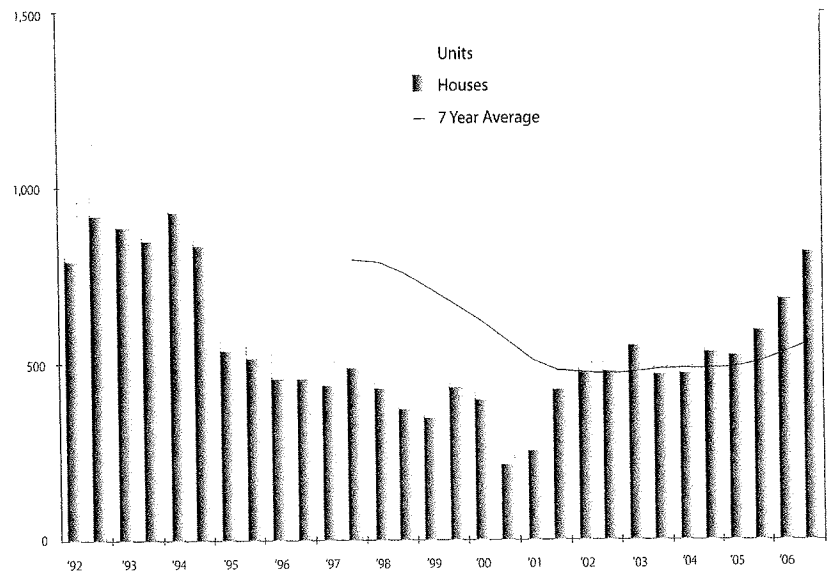
## Fitzroy - Rockhampton / Gladstone Half Yearly Dwelling Approvals

Half Year Ending	Houses	Units	TOTAL	
Dec '98	377	78	455	757
Jun '99	348	70	418	716
Dec '99	435	53	488	670
Jun '00	399	41	440	623
Dec '00	215	27	242	568
Jun '01	254	31	285	510
Dec '01	430	76	506	481
Jun '02	479	44	523	474
Dec '02	480	43	523	469
Jun '03	552	74	626	474
Dec '03	469	170	639	483
Jun '04	475	54	529	485
Dec '04	534	57	591	484
Jun '05	526	39	565	488
Dec '05	591	93	684	504
Jun '06	674	100	774	530
Dec '06	820	177	997	566

Source: ABS 8731.0

For the last two years there has been a very strong upward trend in total dwelling approvals in the Gladstone/Rockhampton region. House approvals increased by 38% in the December 2006 half, over the same half year in 2005, while unit approvals were up by 90%.

## Fitzroy - Rockhampton / Gladstone Half Yearly Dwelling Approvals



## Fitzroy Statistical Division

Total regional population at the last six Censuses and total census count since 1961 are:

### Fitzroy - Rockhampton / Gladstone Population Growth

	1981	1986	1991	1996	2001	Increase 96 - 01
R/hampton City	52,383	56,742	59,418	59,732	58,382	(-1,350)
L/stone Shire	15,711	15,886	19,341	24,796	27,017	2,221
Fitzroy Shire	4,645	6,406	8,050	9,499	9,553	54
Gladstone City	22,712	22,786	24,205	26,454	26,835	381
Calliope Shire	8,700	9,720	11,099	13,954	15,091	1,137
Totals	104,151	111,540	122,113	134,435	136,878	2,443

### Total Census Count Increases

Year	Total	Increase	Annual % Chg
1961	65,863	—	—
1966	74,394	8,531	2.5%
1971	82,293	7,899	2.0%
1976	90,211	7,918	1.9%
1981	104,151	13,940	2.9%
1986	111,540	7,389	1.4%
1991	122,113	10,573	1.8%
1996	134,435	12,322	1.9%
2001	136,878	2,443	0.4%

We estimate the population of the region at **February 2007 to be approximately 144,200** and at an annual growth rate of 1.0% p.a. the population will reach 150,000 in 2010.

### Fitzroy - Rockhampton / Gladstone Population Growth (projected growth rate 1.0% p.a.)

